

SDI Rolling Steel Fire Doors



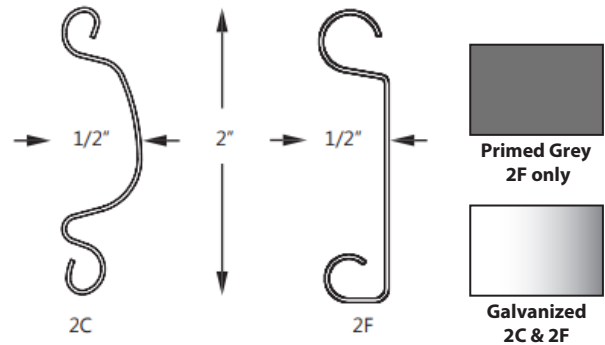
ROLLING STEEL SERVICE FIRE DOOR

- Manufactured in Canada
- 2" flat slat or curved slat curtain in 22ga. steel
- Provides years of trouble free operation
- Available in push up, chain hoist, stay open and motor operation
- Fluid governor release mechanism for smooth and quiet operation

Rolling Steel Fire Door



Slats



Operation-Models

- FPF:** Push up, face of wall
- FCF:** Chain Hoist, face of wall
- FMF:** Motor, face of wall
- FSF:** Stay Open, face of wall

Options



Slide Bolt Lock



UL Brush Weather-seal



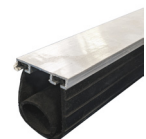
Nema 7/9
Explosion proof motor



Nema 4 Water proof motor
Nema 4X Corrosion proof motor



Fire Link
release device



Sensing Edge

Hardware

Refer to hardware specification sheet for full information and options

FEATURES

- Rugged 2" flat slats or curved slats in 22 ga. steel
- G90 galvanized curtain and hood does not require further painting
- Drop test is simple and can be performed by a single technician. Resets from one side of opening, reducing testing costs
- Steel plate brackets are more durable than stamped steel bracket plates
- Between jamb mount also available

Materials and Construction

Slats	2" flat or curved slats , 22 ga. steel
Fire label	3/4, 1 1/2, 3 hour (4 hour available for masonry applications) Oversize label available for larger openings
Bottom Bar	Steel double angle
Guides	3 structural steel angle
Hood	24g steel
Headplate	1/4" thick
Maximum Size of Openings Tested	13'6" x 12'0" high
Warranty	1 year on materials and workmanship