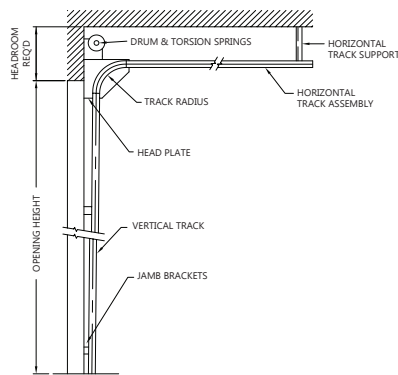


SECTIONAL HARDWARE

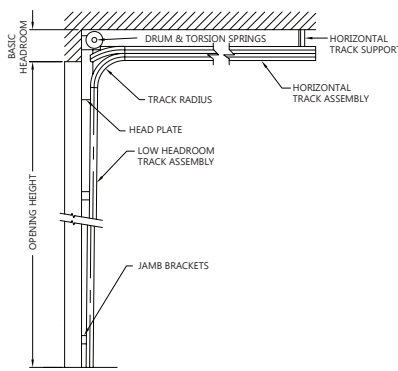
Clearances are critical and should be carefully considered at the planning stage. Too often they are regarded as merely installation instructions with costly consequences. This situation is true for all doors of this type regardless of the door manufacturer. The center post between the door requires two times the side door clearance. Electric operators affect head and/or side room requirements. Standard lift headroom can be reduced with a double radius track system.

Note: Please consult head office for conditions other than those shown.

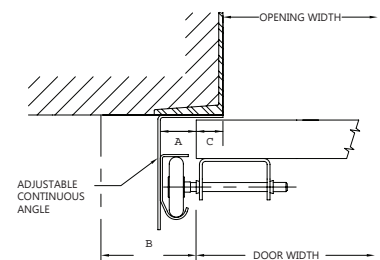
STANDARD LIFT DOOR



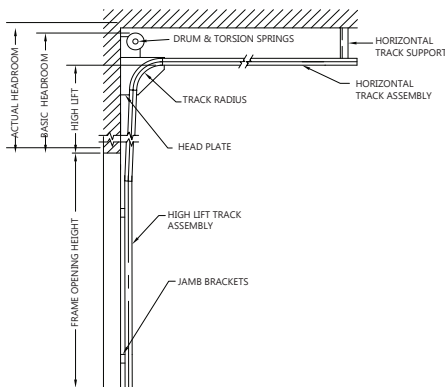
LOW HEADROOM FRONT MOUNT DOOR



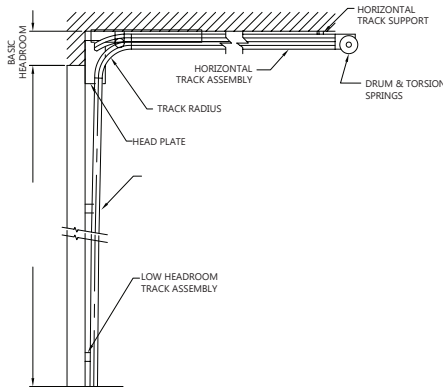
STEEL JAMB



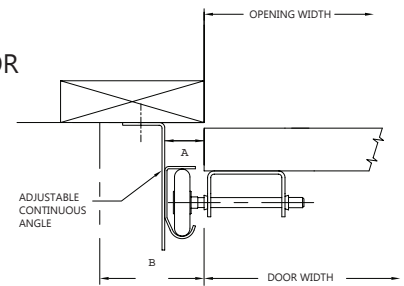
HIGH LIFT DOOR



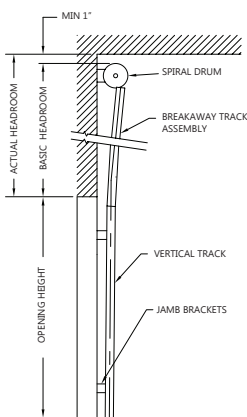
LOW HEADROOM REAR MOUNT DOOR



WOOD JAMB



VERTICAL LIFT DOOR



LOW HEADROOM VERTICAL LIFT DOOR

